



# Avoid Particles in your Liquid

## LKSF Slot Strainer

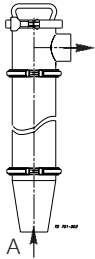
PD 65091 GB1 2002-02

### Application

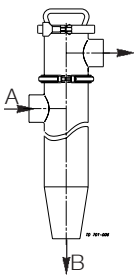
LKSF has a wide range of applications within process filtering, especially where strainers of sanitary design are required.

### Working principle

**Type LKSF-BL** The product enters at A. Impurities are stopped by the filter element. When the filter is full of particles, it can be cleaned by removing the clamp and pulling out the filter element. It is also possible to reverse the flow and flush out the impurities (back flush).



**Type LKSF-CL** The product enters the filter at A. Most of the impurities will collect at the bottom and can be emptied via a valve, during operation. Emptying can also be automatic by means of two remote-controlled valves at B. The upper valve is open during operation and the lower is closed. The impurities will collect between the two valves. Closing the upper valve and opening the lower one will empty the impurities with a minimum of product loss.



The filter can be cleaned as LKSF-BL. The degree of filtering can be altered by changing filter element. Strainer type LKSF-CL must always be installed vertically. The degree of filtering may be changed immediately by changing elements.

### Standard design

Both strainer types consist of a housing in three parts, LKSF-BL has housing in two parts (101.6 mm) in which the strainer element is placed. The housing is assembled by means of clamps, (the upper clamping ring has a wingnut for manual operation) to allow for quick dismantling for the cleaning. The strainer element is fitted centrally in the housing and has direct access to the end cover of same where a welded on handle facilitates dismantling when cleaning is required.

### Materials

Product wetted steel parts:	AISI 316.
Other steel parts:	AISI 304.
Seals:	EPDM rubber.
Surface finish:	Semi bright.



Fig. 1. LKSF-BL and LKSF-CL, slot strainers.

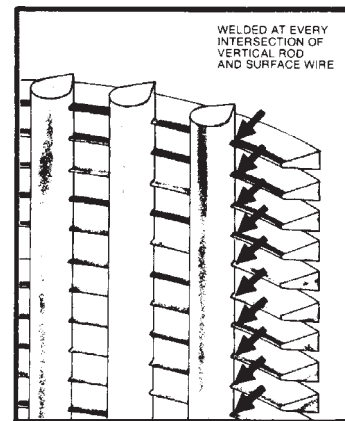


Fig. 2. The LKSF strainer element.

### Technical data

Max. working press. (20°C):	1000 kPa (10 bar).
Temperature range:	-10° to +140°C (EPDM).
Strainer area:	1100 cm <sup>2</sup> .
Max. Δ p in flow direction:	1000 kPa (10 bar).
Capacity:	10-120 m <sup>3</sup> /h (water) at Δ p = 1 bar.

Request separate pressure drop/capacity diagrams.

**Strainer elements - Available slot sizes:**

Standard	Option	
74µm	53µm	595µm
105µm	63µm	841µm
177µm	88µm	1190µm
500µm	125µm	1410µm
707µm	149µm	1680µm
1000µm	210µm	2380µm
2000µm	250µm	2830µm
	297µm	3360µm
	354µm	
	420µm	

**Dimensions (mm)**

Size	25	38	51	63.5	76.1	101.6
	mm	mm	mm	mm	mm	mm
A1	727	727	727	727	727	752
A2	852	808	766	727	688	693
B1	632.5	632.5	632.5	632.5	632.5	647.5
B2	756	712	670	631	592	583
C	130	130	130	130	130	150
OD <sub>1</sub>	25.4	38.1	50.8	63.5	76.2	101.6
ID <sub>1</sub>	22.2	34.9	47.6	60.3	73	97.6
t <sub>1</sub>	1.6	1.6	1.6	1.6	1.6	2
OD <sub>2</sub>	63.5	63.5	63.5	63.5	63.5	63.5
ID <sub>2</sub>	60.3	60.3	60.3	60.3	60.3	60.3
t <sub>2</sub>	1.6	1.6	1.6	1.6	1.6	1.6
OD <sub>3</sub>	25	38	51	36.5	76.1	101.6
ID <sub>3</sub>	22.6	35.6	47.8	60.3	72.1	97.6
t <sub>3</sub>	1.2	1.2	1.6	1.6	2	2
E	86	86	86	86	86	86
Weight (kg)	8.7	9.2	9.0	8.5	9.0	9.5

**Additional length (mm) - For male parts (both types)**

Size	25	38	51	63.5	76.1	101.6
	mm	mm	mm	mm	mm	mm
DS	18.5	20	20	24	24	24
SMS	15	20	20	24	24	35
IDF	21.5	21.5	21.5	21.5	21.5	21.5
BS	22.2	22.2	22.2	22.2	22.2	27
Clamp	21.5	21.5	21.5	21.5	21.5	21.5
DIN	22	22	22	25	30	30

**Connection positions**

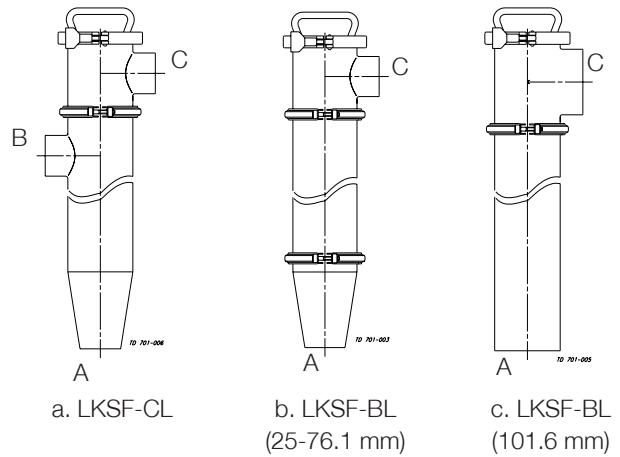


Fig. 3. Specification of male part positions (A-B-C).

**Note!** All sizes have ISO-clamp ring. (101.6 mm (4") has no clamp ring at the bottom.)

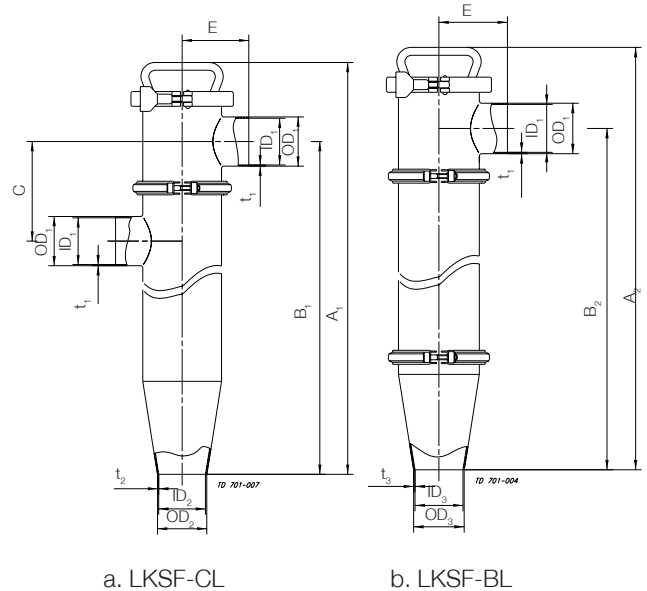


Fig. 4. Dimensions.

**Ordering**

By ordering - specify strainer element, type of male part and position. (See fig. 3 - A, B, C).

**How to contact Alfa Laval**

Contact details for all countries are continually updated on our website. Please visit [www.alfalaval.com](http://www.alfalaval.com) to access the information direct.